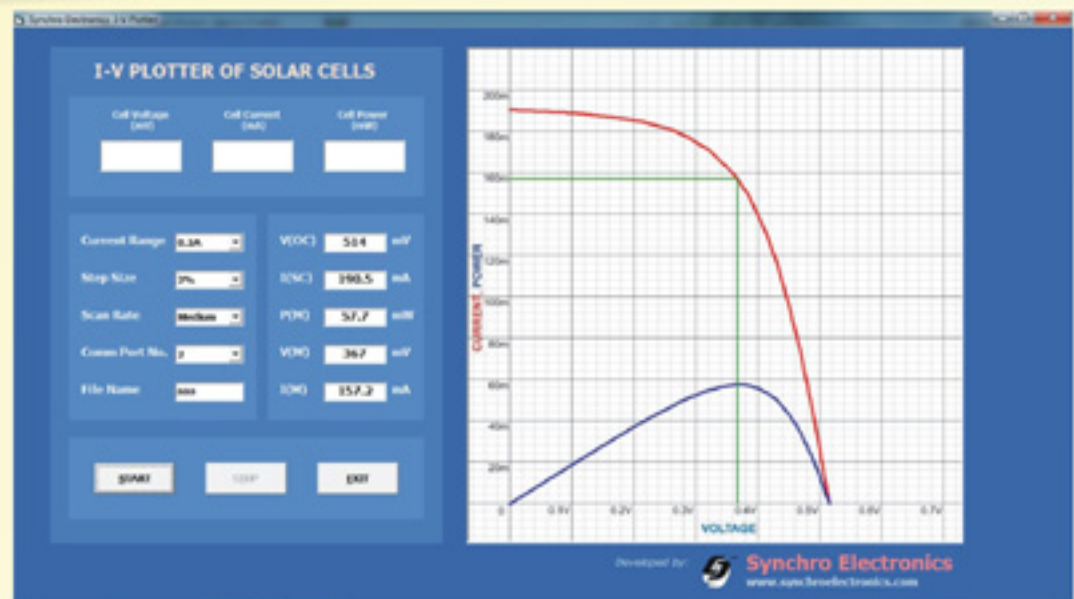


# IV PLOTTER FOR SOLAR CELL AND PANELS



- Voltage Range : 1V, 2V, 5V, 10V, 20V, 50V
- Current Range : 0.2A, 0.5A, 1A, 2A, 5A
- Plotting Curve : I-V and P-V
- Complete logging : Voltage, Current, Power
- Display and logging :  $V_{OC}$ ,  $I_{SC}$ ,  $P_{MAX}$ ,  $V_{MP}$ ,  $I_{MP}$
- Operation : User friendly operation using Windows XP, Windows 7, Windows 8 through USB Port.

